

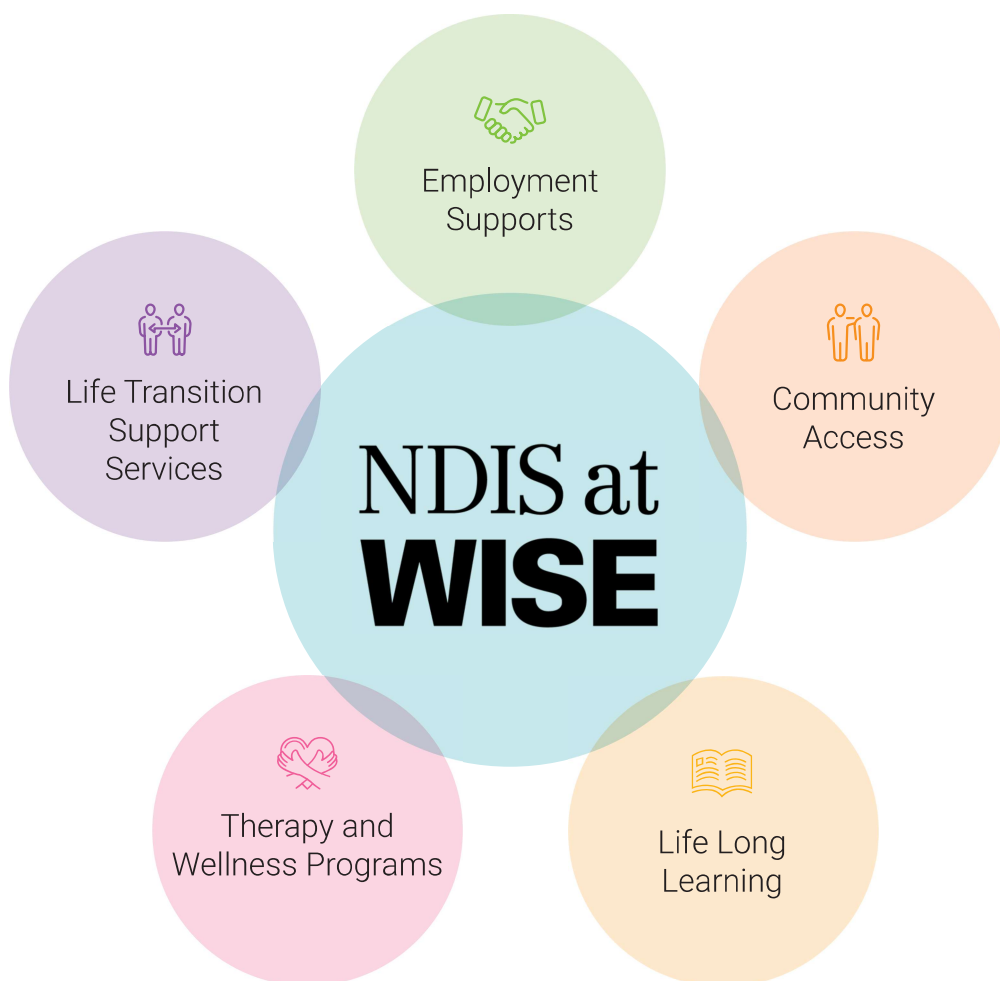
WISE Employment

NDIS at **WISE** Pathways to Empowerment



NDIS at WISE is committed to guiding you through your journey with personalised, compassionate support. Our expert team offers tailored solutions that empower you to confidently navigate life transitions, enhance your independence, and achieve your goals. By providing dedicated assistance, comprehensive resources, and a clear pathway forward, we ensure that you have the tools and confidence to thrive in every aspect of your life. By choosing our Pathway to Empowerment Services, you're not just accessing NDIS services—you're partnering with a team that prioritizes your growth and success.

Service Delivery Model – Pathways to Empowerment



NDIS at **WISE** Pathways to Empowerment



Employment Supports

Discover Your Path to Success with Our Employment Supports:

Employment Focus Work Readiness

Prepare for a successful career with our Work Skills program, tailored to boost your work readiness.

This program includes:

- **Self-Management:** Develop strategies for effective personal and professional management.
- **Travel Training:** Learn how to navigate transportation for job-related needs.
- **Workplace Skills:** Master workplace ethics, safety, and presentation.
- **Teamwork and Communication:** Enhance your ability to work collaboratively and communicate effectively.
- **Resume and Job Applications:** Craft compelling resumes and prepare for interviews.

Our individualized approach ensures that the program supports your unique needs and career goals.

School Leavers Employment Services

Transition smoothly from school to the workforce with our specialized program for individuals with disabilities.

We offer:

- **Skill Development:** Prepare for employment with tailored skill-building activities.
- **Career Preparation:** Get ready for the job market with focused support and guidance.

Volunteering Pathway

Unlock personal growth and community impact with our Volunteering Pathway. This program offers opportunities to:

- **Build Confidence:** Develop self-assurance while contributing to meaningful causes.
- **Learn New Skills:** Gain valuable experience and expand your skill set.
- **Create Connections:** Form relationships and network within your community.
- **Feel Accomplished:** Experience the satisfaction of giving back and making a difference.

Explore your interests or discover new directions to enhance your skills and knowledge through volunteering.

Work Experience

Dive into practical learning with our Work Experience program. This hands-on approach helps you:

- **Develop Self-Awareness:** Gain insights into your strengths and areas for growth.
- **Build Confidence:** Enhance your self-assurance in a professional setting.
- **Learn Workplace Skills:** Understand workplace ethics, safety, presentation, teamwork, communication, and task management.

Acquire the essential skills needed to excel in the workforce through real-world experience.

Let us help you navigate your journey to a fulfilling career with confidence and skill.



Community Access

Empower yourself or your loved ones with our Community Access supports, designed to foster meaningful engagement and skill-building within the community.

We work closely with participants and their families/representatives to provide customised support that aligns with their goals and needs. Our services include:

- **Community Connection:** Facilitate access to community resources and opportunities to help build independence and learn new skills.
- **Fun and Safe Environment:** Enjoy a supportive and relaxed setting where learning and personal growth are prioritised.
- **Innovative Solutions:** Benefit from creative approaches to achieving your goals, tailored to your unique circumstances.
- **Mentoring and Confidence Building:** Receive guidance on meeting and greeting new people, enhancing social skills, and boosting self-assurance.
- **Learning-Focused Activities:** Engage in activities designed to promote learning and personal development.

We will support you to thrive in the community with tailored support that encourages growth, independence, and connection.



Life Long Learning

Empower yourself and embrace growth with our Life Long Learning program.

Unlock your potential with our Life Long Learning program, designed to equip you with essential skills for thriving in everyday life. Our comprehensive support encompasses:

- **Effective Communication:** Develop the skills to express yourself confidently and clearly.
- **Self-Confidence Building:** Cultivate the confidence to pursue your goals and aspirations.
- **Independent Living Skills:** Learn key skills for managing your home, budgeting, cooking, and self-care.
- **Literacy and Navigation:** Enhance your literacy and ability to get around with ease.
- **Community Integration:** Engage with your community and build meaningful social connections.
- **Safety Awareness:** Gain strategies to keep yourself safe and secure.
- **Tailored support to meet your goals.**

Our program offers:

- **Personalised Supports:** Tailored to help you achieve your unique dreams and aspirations.
- **Group-Based Educational Programs:** Specialised learning experiences to support your goals in a collaborative setting.
- **Coaching and Mentoring:** Ongoing guidance to help you stay on track and reach your full potential.
- **Daily Living Assistance:** Practical support to enhance your daily life and independence

Together, we'll help you flourish in all areas of life



Therapy and Wellness Programs

Empower Your Well-being with Our NDIS Occupational Therapy Services

Discover how our dedicated NDIS Mental Health Occupational Therapists can enhance your daily life by addressing the impact of mental health on your routine. Our expert team offers specialized support in:

- **Mental Health Management:** Tailored strategies to improve overall well-being.
- **Social Cognition and Interaction Training (SCIT):** Boost your social skills and interactions.
- **Evidence-Based Assessments:** Thorough cognitive, sensory, and vocational evaluations to guide your progress.

For those seeking support with independent living, our NDIS Community Occupational Therapists are here to help. We provide:

- **Functional and Capacity Assessments:** Evaluations conducted in your home to identify your needs and strengths.
- **Comprehensive Recommendations and Reports:** Detailed insights to inform your support plan.
- **Supported Independent Living (SIL) Recommendations:** Expert advice to enhance your independence and quality of life.

Let us support you on your journey to a more fulfilling and independent life.



Life Transition Support Services

Navigate life's changes with confidence and clarity through our NDIS Life Transition Support Services. Designed to assist individuals as they move through significant life stages or shifts, our comprehensive support ensures a smooth and successful transition. We offer personalized assistance tailored to your unique needs and goals, including:

- **Personalised Transition Planning:** Collaborate with you to develop a tailored plan that addresses your specific transition needs, whether moving from school to adulthood, changing living arrangements, or adapting to new life circumstances.
- **Skill Development:** Enhance your independence and adaptability with targeted skill-building sessions. This includes developing daily living skills, self-management strategies, and practical life skills to support your new phase of life.
- **Emotional and Psychological Support:** Access to counselling and emotional support to manage the stress and adjustments associated with life transitions.
- **Community Integration:** Facilitate your connection with community resources and support networks. We help you engage with local services, build social connections, and participate actively in your community.
- **Work and Education Guidance:** Receive support in exploring educational and employment opportunities. Our services include career counselling, resume building, job search assistance, and educational planning to ensure you are well-prepared for future opportunities.
- **Ongoing Monitoring and Adjustments:** Benefit from continuous support and regular check-ins to monitor your progress and make necessary adjustments to your transition plan. Our goal is to ensure you achieve your desired outcomes and adapt smoothly to your new circumstances.

Our Life Transition Support Services are dedicated to empowering you through every change, providing the tools and support needed to thrive in your evolving journey.

For more information

Please contact the NDIS at WISE team during business hours on:

Phone: 1800 571 172

Email: achieve@wiseemployment.com.au